

<b>JAKA</b>	Manual	JAKA Software 1.7.2 Upgrade Manual	Doc Level	4
		DOC Version 1.0	Language	EN

# JAKA Software 1.7.2 Upgrade Manual

Version: V1.0

Time: 2025.05.09

<b>JAKA</b>	Manual	JAKA Software 1.7.2 Upgrade Manual	Doc Level	4
		DOC Version 1.0	Language	EN

## Document information

Version number	V1.0	Version date	2025. 05. 09
Author	W.S	Draft date	
Reviewer		The date of review	
Approver		The date of approval	

## Version record

Version number	Version date	Modified By	Content
V1.0	2024.05.09	W.S	First Version

## Description of property rights

*Copyright JAKA Robotics.*

*JAKA Robotics has intellectual property rights in the relevant technologies contained in the products described in this document.*

This document and related products are distributed under licenses that restrict their use, reproduction, distribution, and decompiling. This product or any part of this document may not be reproduced in any way or in any form without the prior written authorization of *JAKA Robotics GmbH*.

<b>JAKA</b>	Manual	<b>JAKA Software 1.7.2 Upgrade Manual</b>	Doc Level	4
		<b>DOC Version 1.0</b>	Language	EN

## Contents

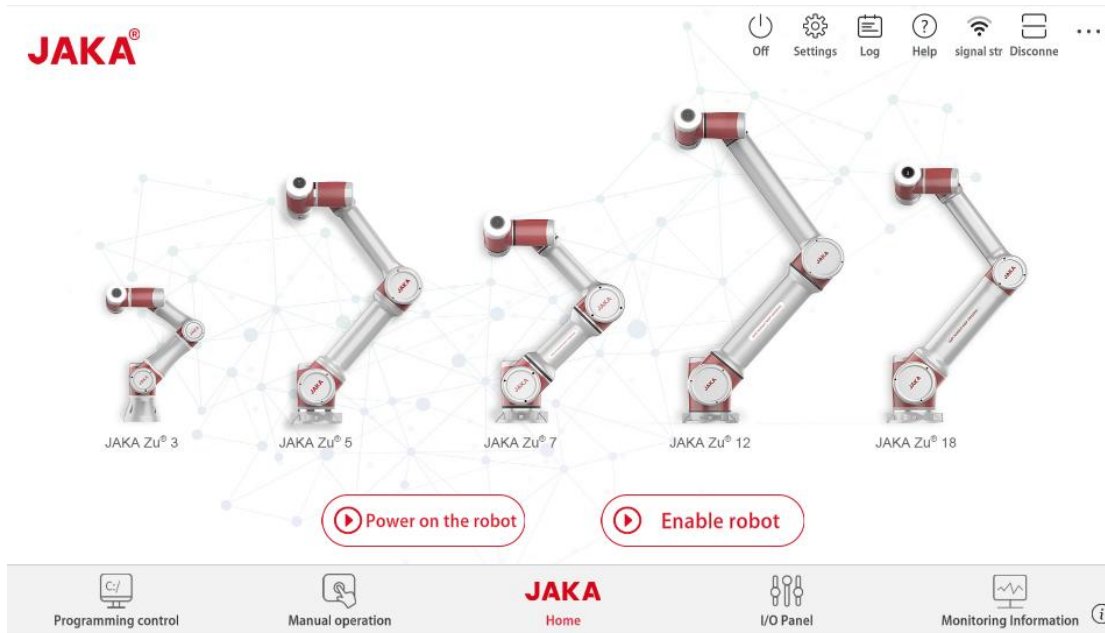
1	Preparation before Upgrade.....	4
1.1	Connect the Cobot.....	4
1.2	Check Current Software Version.....	5
1.4	Back up Configuration files & Programs.....	6
2	Software upgrade.....	7
2.1	Upgrade from 1.7 Controller Version.....	8
2.2	Upgrade from 1.5 Controller Version.....	11
2.3	Restore Configuration files & Programs.....	12


<b>JAKA</b>	Manual	<b>JAKA Software 1.7.2 Upgrade Manual</b>	Doc Level	4
		DOC Version 1.0	Language	EN

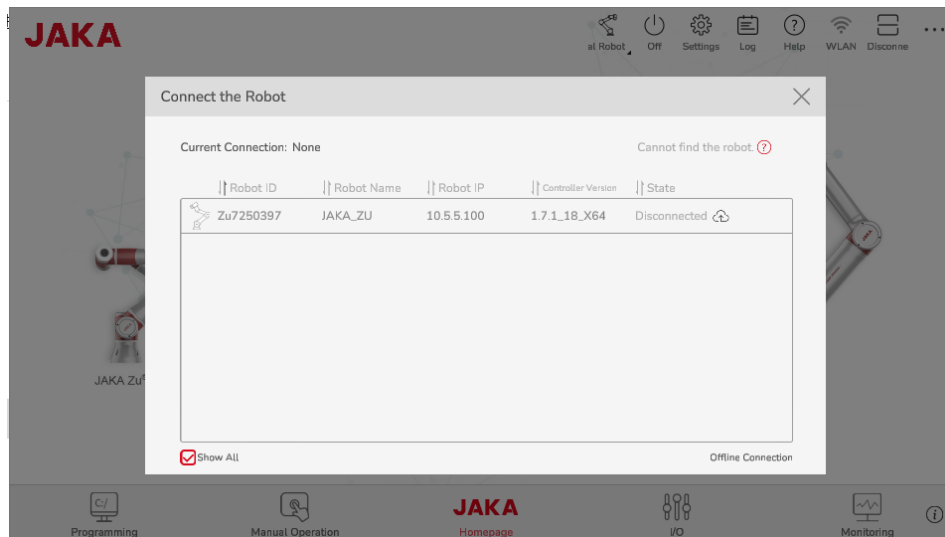
# 1 Preparation before Upgrade

## 1.1 Connect the Cobot

1. Connect the Tablet or PC to the same network as the cabinet
2. Open JAKA Zu APP in the tablet or PC.

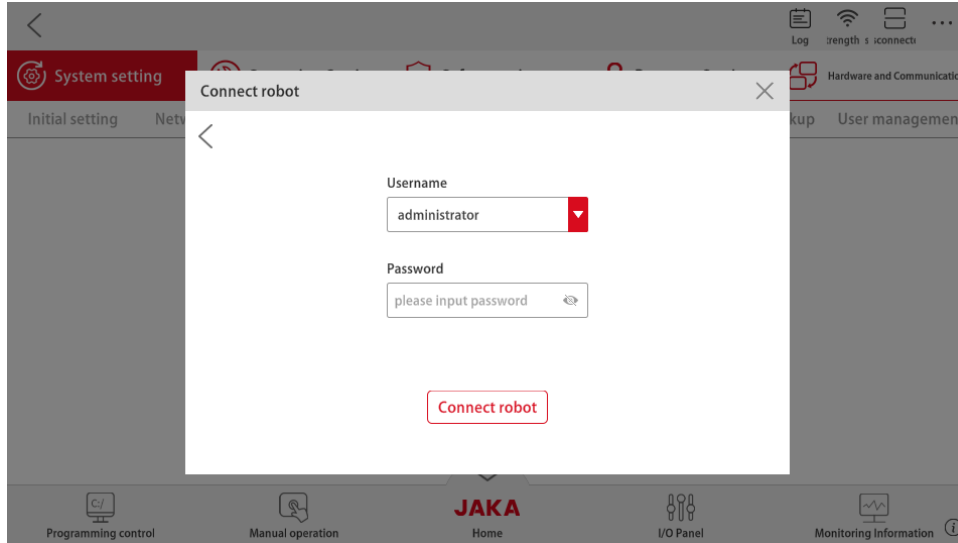


3. Click the icon  at top right corner to find the correct robot and connect.




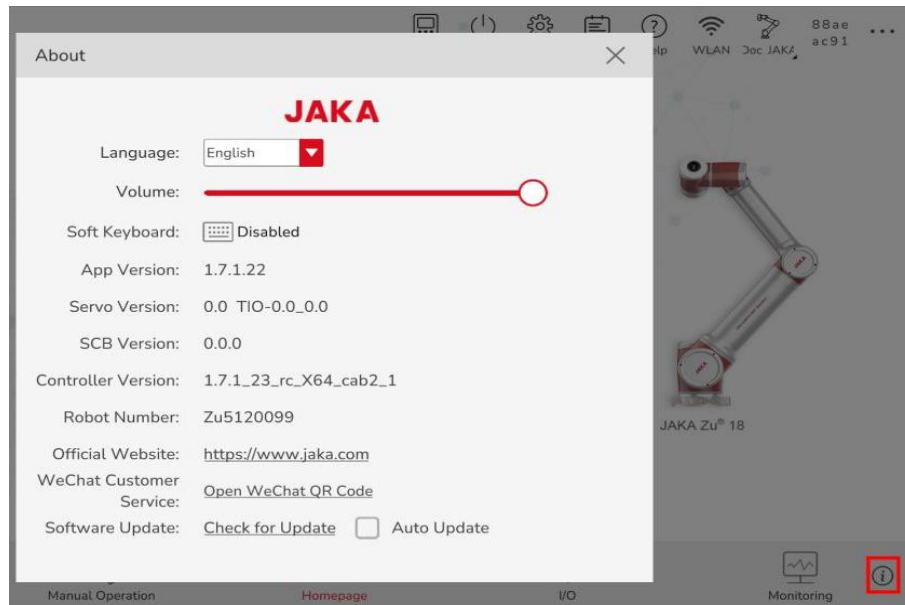
Login via password for administrator (default password: jakazuadmin)

<b>JAKA</b>	Manual	<b>JAKA Software 1.7.2 Upgrade Manual</b>	Doc Level	4
		<b>DOC Version 1.0</b>	Language	EN



## 1.2 Check Current Software Version

After login, enter the homepage of the software, click  in the lower right corner to open the About window (with version information included), Power on the robot before checking the servo version. check the information such as App Version, Servo Version, SCB Version, Controller Version and Robot Number.

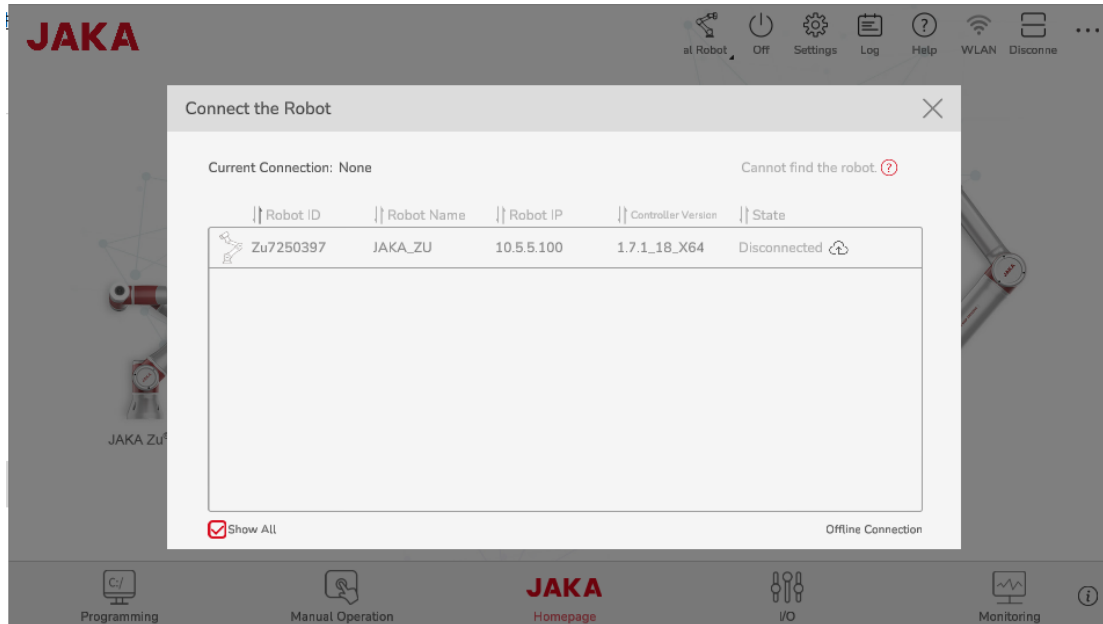


### Notes:

1. Before upgrading, please check SCB or PSCB version. If the original SCB version is below 02\_55 or the PSCB version is below 02\_06, please do not upgrade by yourself. Contact JAKA technicians via [support@jaka.com](mailto:support@jaka.com) or [support.eu@jaka.com](mailto:support.eu@jaka.com)

<b>JAKA</b>	Manual	<b>JAKA Software 1.7.2 Upgrade Manual</b>	Doc Level	4
		<b>DOC Version 1.0</b>	Language	EN

2: Check the controller version, proceed only if “Controller Version” is ended with “X64”. If “Controller Version” is ended with “x86”, please do not upgrade by yourself. Contact JAKA technicians via [support@jaka.com](mailto:support@jaka.com) or [support.eu@jaka.com](mailto:support.eu@jaka.com);



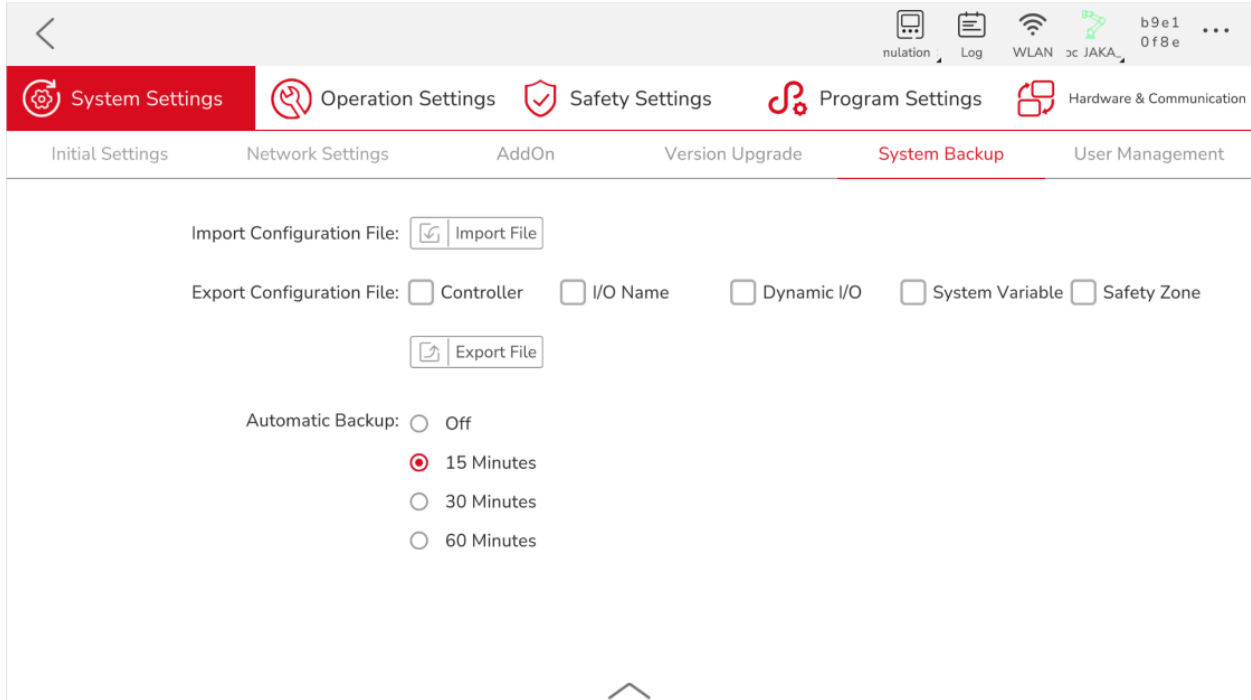
## 1.4 Back up Configuration files & Programs

In case of any configuration files & program lose during the upgrading process, it's recommended to back up the Configuration files & Programs

### Backup configuration files:

The configuration file are the user configuration parameters that the user modifies when using the robot, including the controller, I/O name, dynamic I/O, system variable and safety zone. Export method: Click **【Settings】 > 【System Settings】 > 【System Backup】**, select the configuration file to be exported, click “Export File”, select the saving path, and click “OK”. The actual selectable export items diff according to current controller and app versions.

<b>JAKA</b>	Manual	<b>JAKA Software 1.7.2 Upgrade Manual</b>	Doc Level	4
		<b>DOC Version 1.0</b>	Language	EN

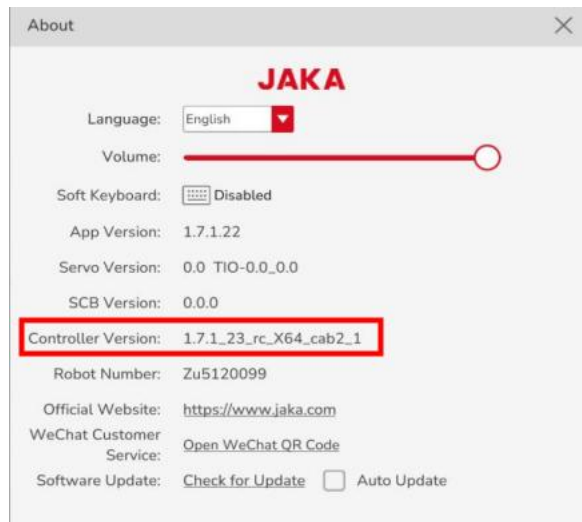


### Backup programs:

Please refer to the Software Manual of Zu App for exporting programs.


## 2 Software upgrade

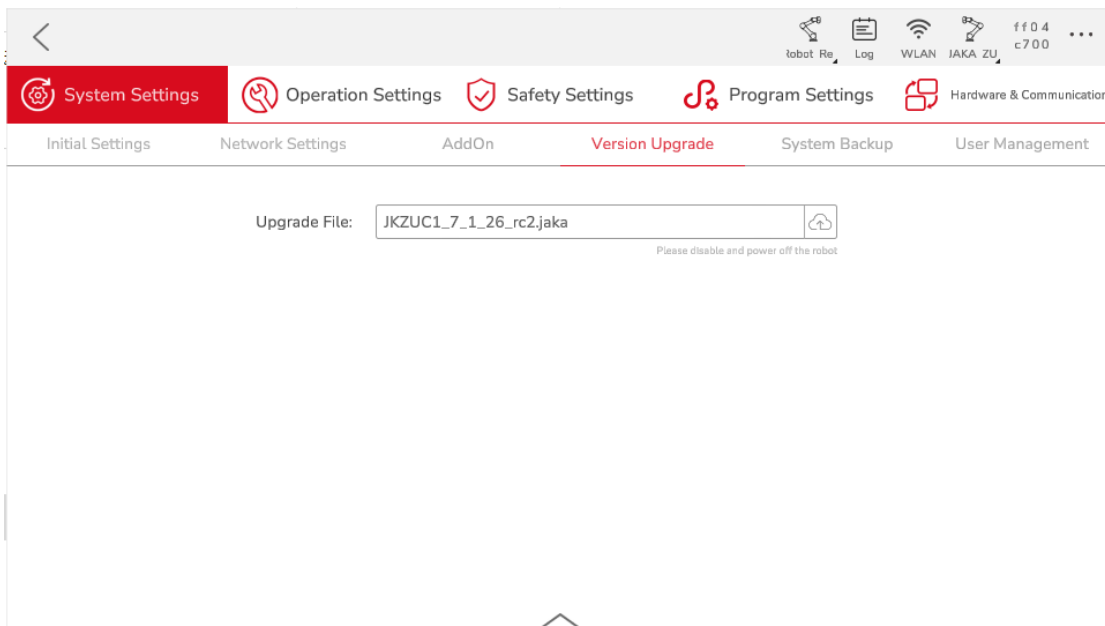
Check the current controller version first, if the current controller version is 1.7.xx, proceed with section 2.1, if the current controller version is 1.5.xx, proceed with section 2.2 first.



<b>JAKA</b>	Manual	<b>JAKA Software 1.7.2 Upgrade Manual</b>	Doc Level	4
		DOC Version 1.0	Language	EN

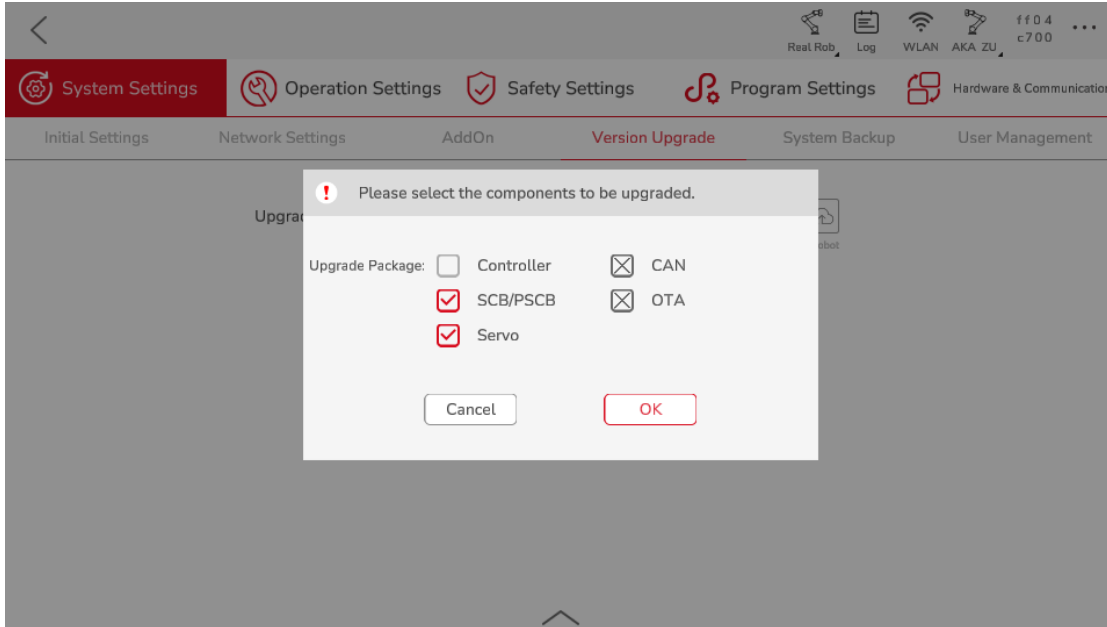
## 2.1 Upgrade from 1.7 Controller Version

1. Download the Controller software “1.7.x.x one click upgrade package.zip” and extract to get “JKZUC1\_7\_x\_xx.jaka”.
2. Make sure a cobot arm is connected to the controller, and the emergency stop button or additional emergency stop input are not activated. So that the upgrading function of controller software can power up the cobot arm.
3. Open the App to connect to the robot, confirm that the robot is powered off and disabled
4. Click **【Settings】** > **【System Settings】** > **【Version Upgrade】** , Click the upload area to select file, and then, click the  icon to upload, upload the Controller software upgrade package(JKZUC1\_7\_x\_x.jaka), the suffix of the upgrade package most keep .jaka and cannot be modified.

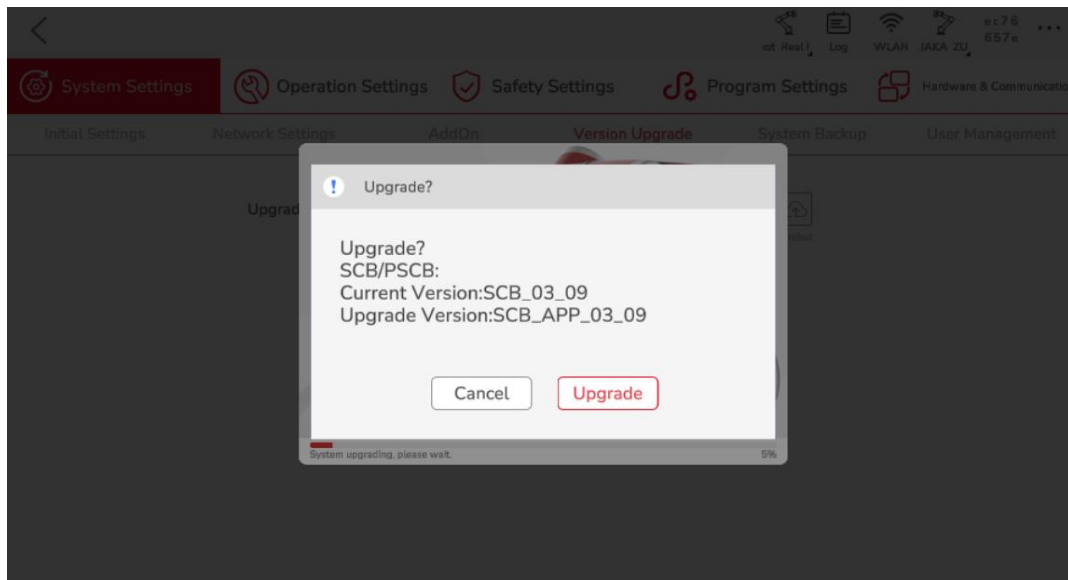


5. Select the components to be upgraded and click OK.

<b>JAKA</b>	Manual	<b>JAKA Software 1.7.2 Upgrade Manual</b>	Doc Level	4
		<b>DOC Version 1.0</b>	Language	EN

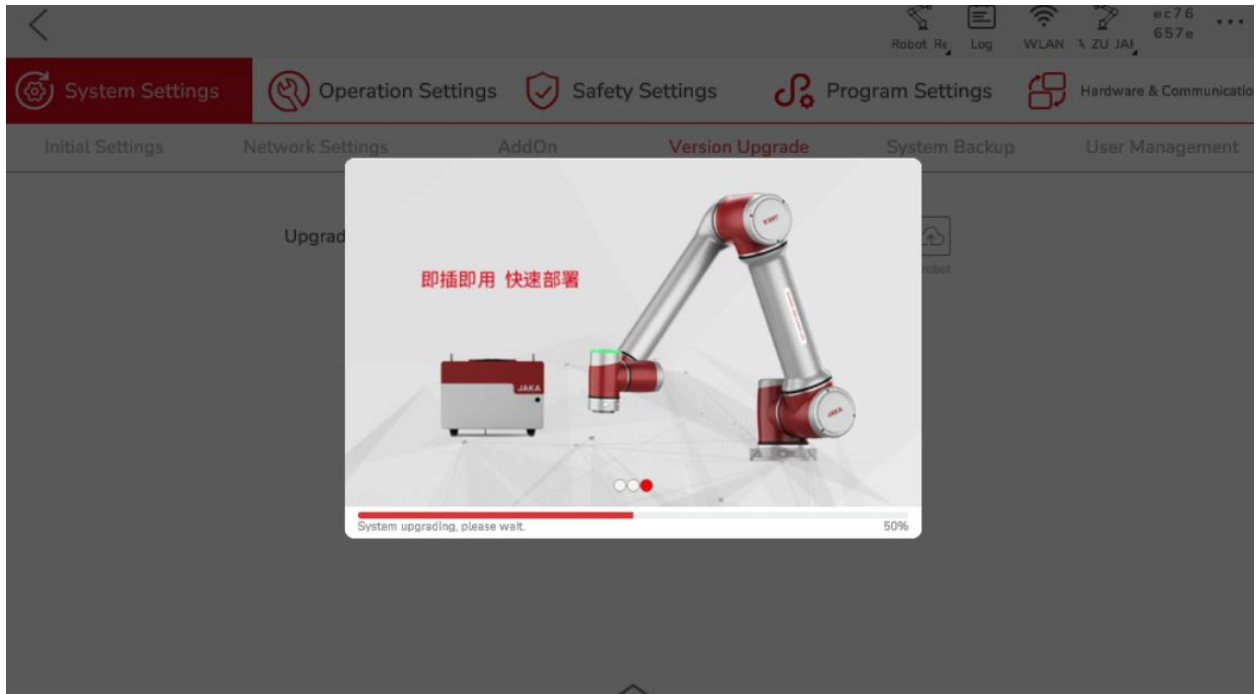


6.The Controller will power on cobot arm to check servo version and power it off after a few seconds and then pop up the following Window.

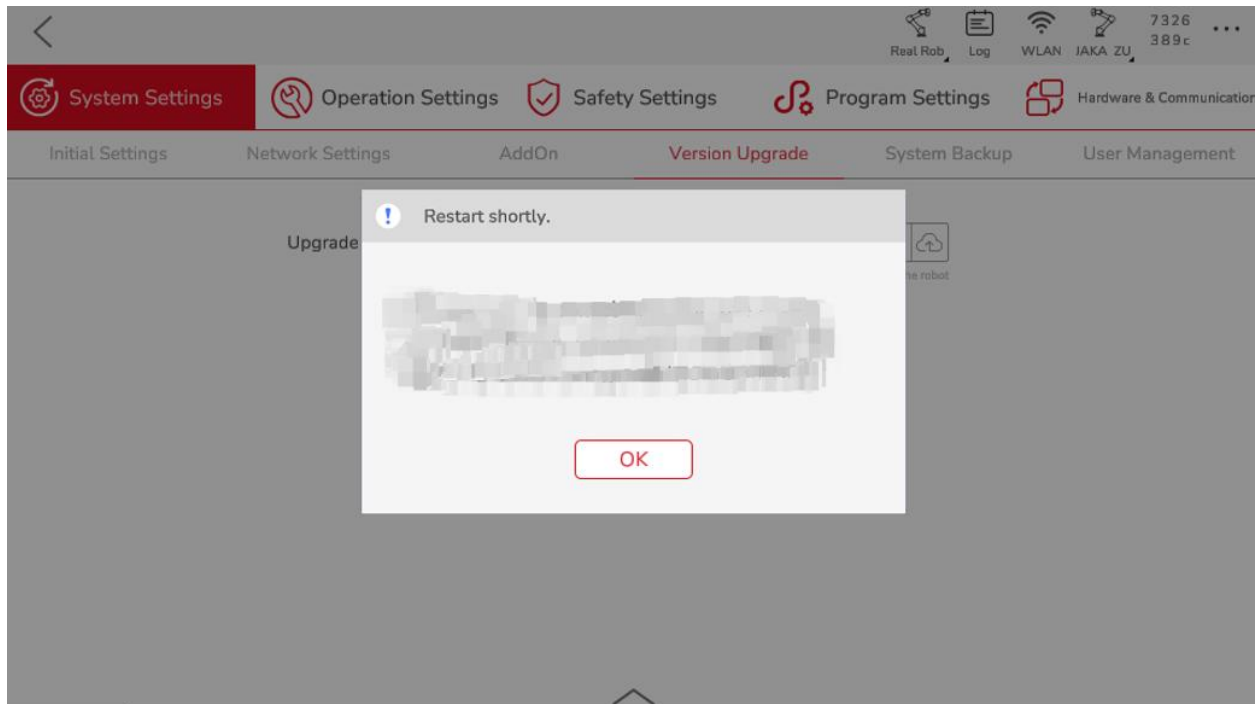


7.After clicking Upgrade, there will be an upgrade progress page as follows.

<b>JAKA</b>	Manual	<b>JAKA Software 1.7.2 Upgrade Manual</b>	Doc Level	4
		DOC Version 1.0	Language	EN



8. After this progress, there will pop up a Window “Restart Shortly”, then click OK.




**9. If upgrading SCB/PSCB was chosen in step 5, the cabinet will shut down automatically during the upgrading process, please manually power on the control cabinet to complete the upgrade process. If the upgrade for SCB/PSCB was not selected, the system will automatically reboot and complete the upgrade process. The system may reboot a couple of times during the upgrade process, please do not cut off the**

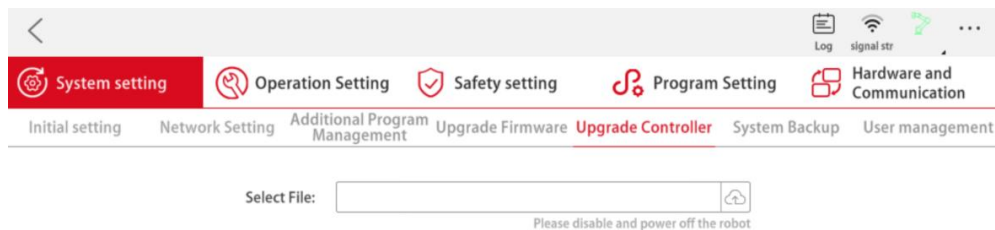
<b>JAKA</b>	Manual	JAKA Software 1.7.2 Upgrade Manual	Doc Level	4
		DOC Version 1.0	Language	EN

power supply. **Wait until the handle indicator turns blue and the controller cabinet does not reboot within 2 minutes.**

10.Refer Section 1.2 to check the current version information to make sure the software is successfully upgraded.

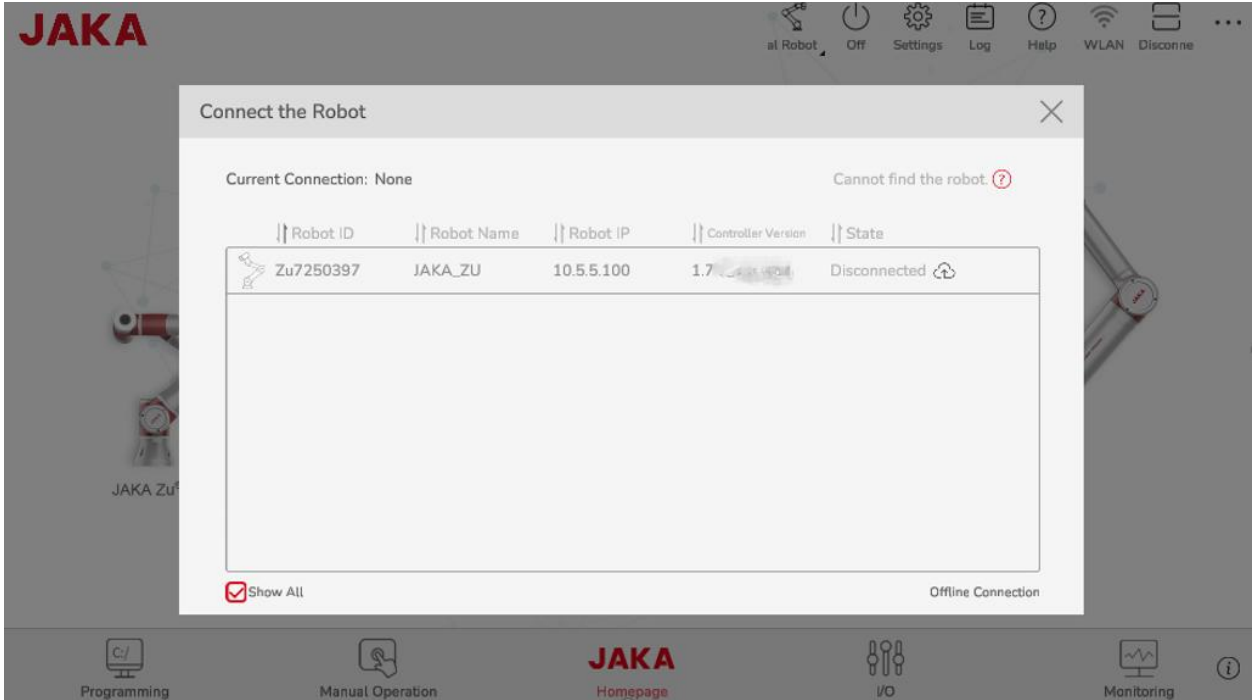
## 2.2 Upgrade from 1.5 Controller Version

1. Download the zip file “upgrade package from jkzuc1.5”
2. extract and install the JAKA Zu App 1.5
3. Open Zu App 1.5 and connect to the Cabinet, and please confirm that the robot arm is powered off.
4. Click **【Settings】** > **【System Settings】** > **【Upgrade controller】** , click the upload area to select file, and then, click the  icon to upload, upload controller upgrade package (Version 1.7.1.36 or above), the upgrade package suffix is **\*.tar.gz** and must not be modified.



- 5.The cabinet will restart after finishing uploading. Please wait until the handle indicator turns blue.
- 6.Connect Tablet or PC to the same network with the cabinet, and check Controller Version from “Connect the Robot” window in Zu App, to see it has been updated to 1.7.x.xx.

<b>JAKA</b>	Manual	<b>JAKA Software 1.7.2 Upgrade Manual</b>	Doc Level	4
		<b>DOC Version 1.0</b>	Language	EN



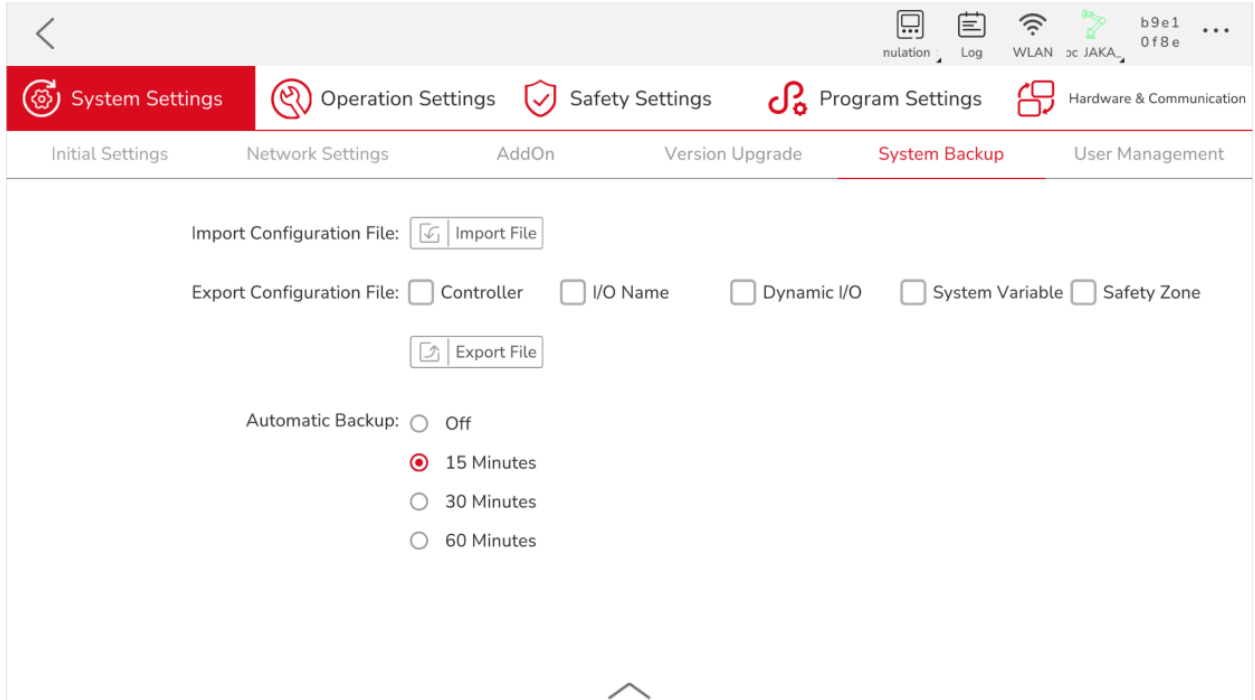
7. Follow the section 2.1 “Upgrade from 1.7 Controller Version” to upgrade Servo、SCB/PSCB firmware.

Note: Version 1.5 control cabinet can only be connected to version 1.5 Zu APP, and version 1.7 control cabinet can only be connected to version 1.7 Zu APP.

## 2.3 Restore Configuration files & Programs

### Restore configuration files

<b>JAKA</b>	Manual	<b>JAKA Software 1.7.2 Upgrade Manual</b>	Doc Level	4
		<b>DOC Version 1.0</b>	Language	EN



on Zu App, open **【Settings】** > **【System Settings】** > **【System Backup】** windows, and then click “Import File” . select the configuration file to be imported and click “OK” . Restart the control cabinet after importing.

### **Restore programs**

Please refer to Software manual of Zu App for the steps of importing programs.

**Note:** Importing configuration files & programs that exported from different controller versions may cause error because of compatibility issues, contact JAKA technicians by email [support@jaka.com](mailto:support@jaka.com) or [support.eu@jaka.com](mailto:support.eu@jaka.com) for further support.